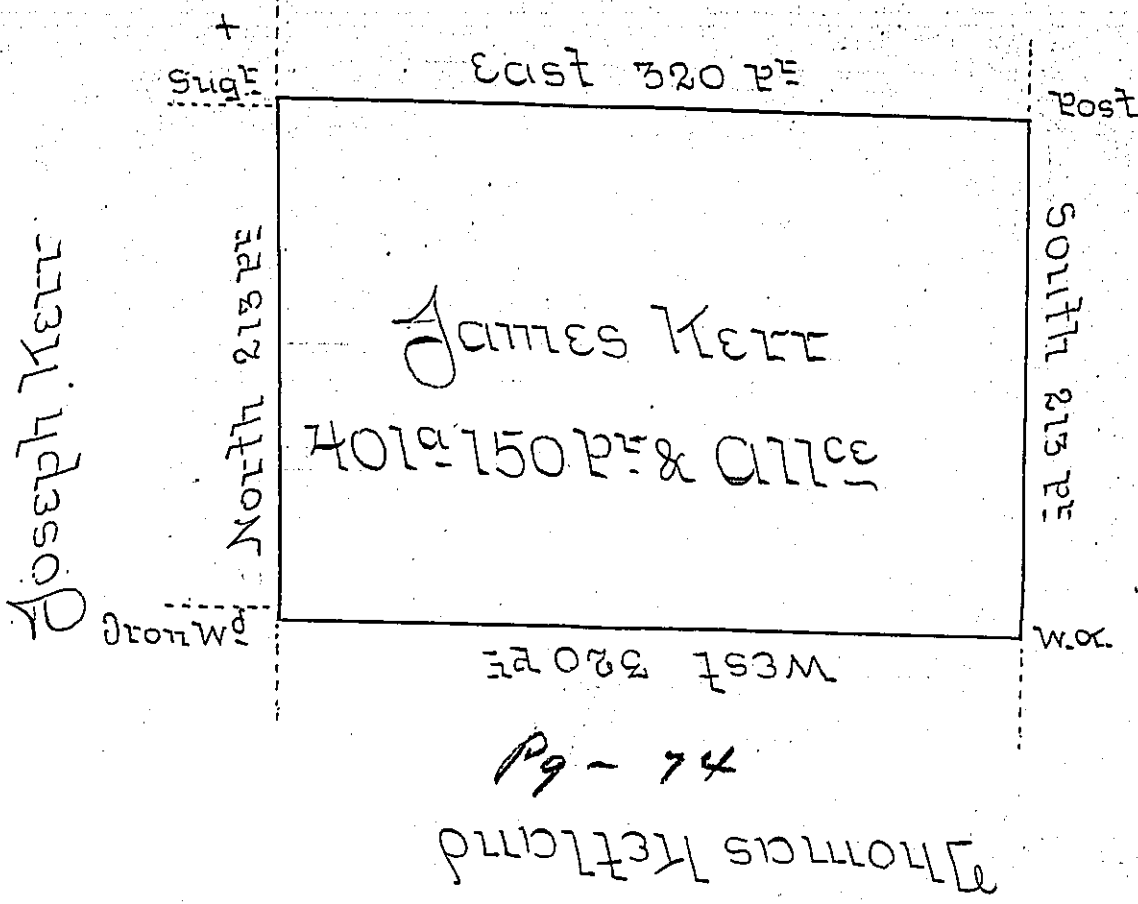


Mary Keen



Situate on the west side of French Creek in Allegheny County containing 401 Acres and 150 P.E. and allowance of six Percent for Roads & surveyed the 17th day of October 1794 In pursuance of a warrant bearing date the 30th day of May 1792

Wm Power D.H.S.E

To Daniel Brodhead Esq
Surveyor General

IN TESTIMONY that the above is a copy of the original remaining on file in the Department of Internal Affairs of Pennsylvania, made conformably to an Act of Assembly approved the 16th day of February, 1833, I have hereunto set my Hand and caused the Seal of said Department to be affixed at Harrisburg, this eight day of August 1905.

Francis Power
Secretary of Internal Affairs.